

CITTA' DI CUORNE'



SISTEMAZIONE COPERTURE EDICOLE FUNERARIE DEL CIMITERO CAPOLUOGO -
CUP: D78I20000640004

PROGETTO DEFINITIVO - ESECUTIVO



Elab. **9**

OGGETTO: INTERVENTO DI REALIZZAZIONE COPERTURA SU EDICOLA FUNERARIA - PROGETTO

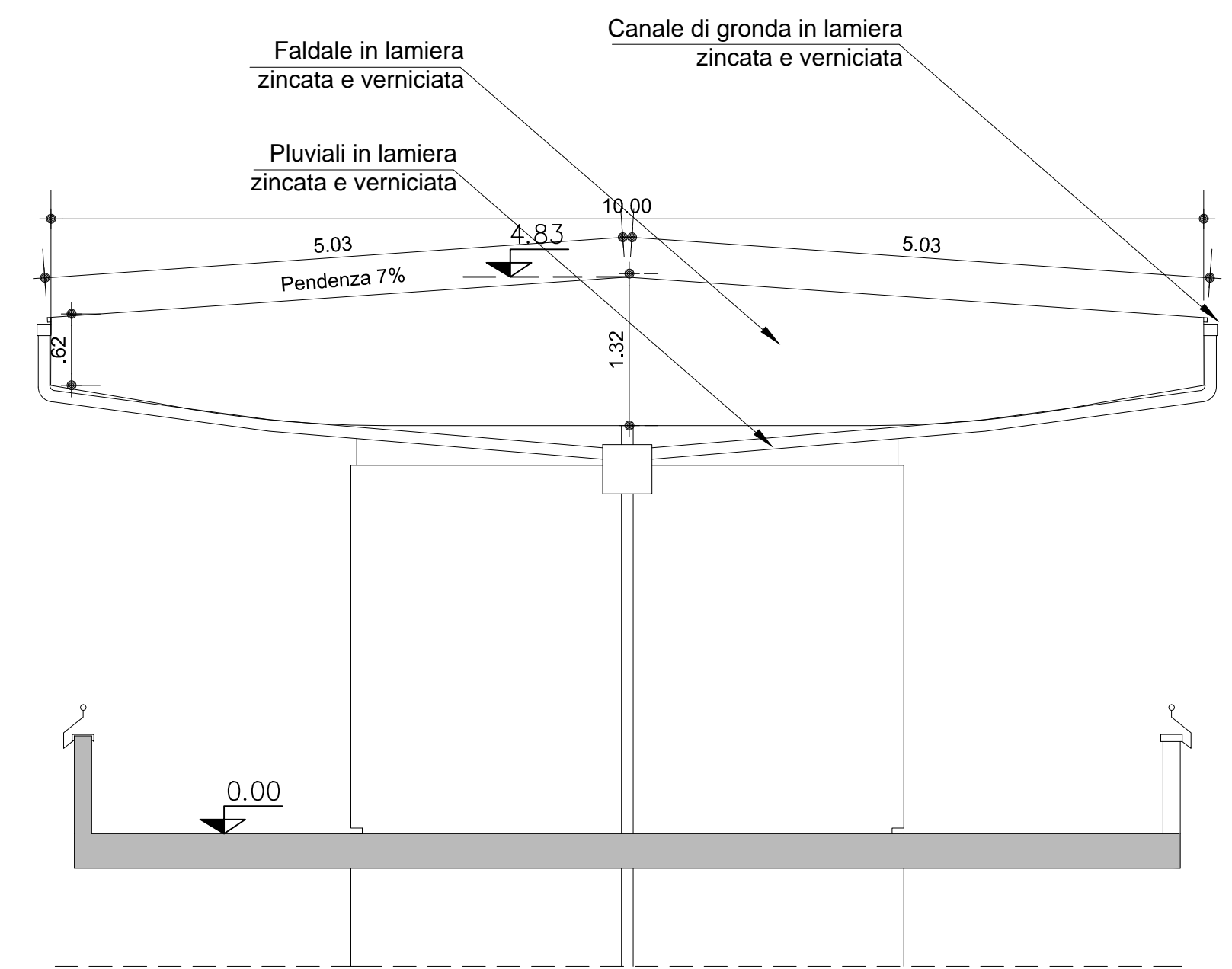
dicembre 2020

PROGETTAZIONE Arch. Katia MASSOGLIA

RESPONSABILE UNICO DEL PROCEDIMENTO Geom. Luca TRIGONE

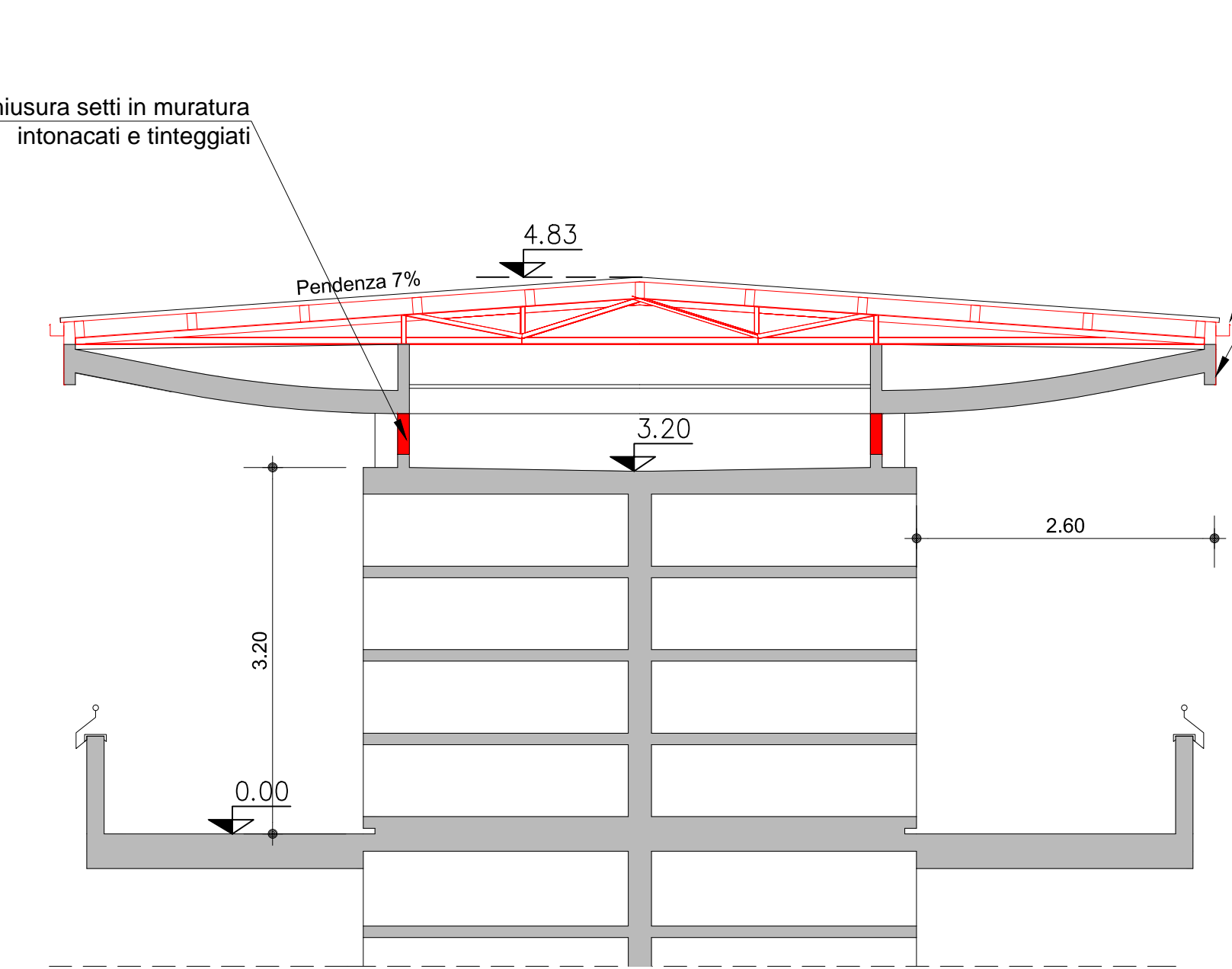
Ai sensi del D.M. 11 gennaio 2017, l'acciaio S235 utilizzato dovrà essere prodotto con un contenuto minimo di materiale riciclato come di seguito specificato in base al tipo di processo industriale:

- Acciaio da forno elettrico: contenuto minimo di materiale riciclato pari al 70%;
- Acciaio da ciclo integrale: contenuto minimo di materiale riciclato pari al 10%.



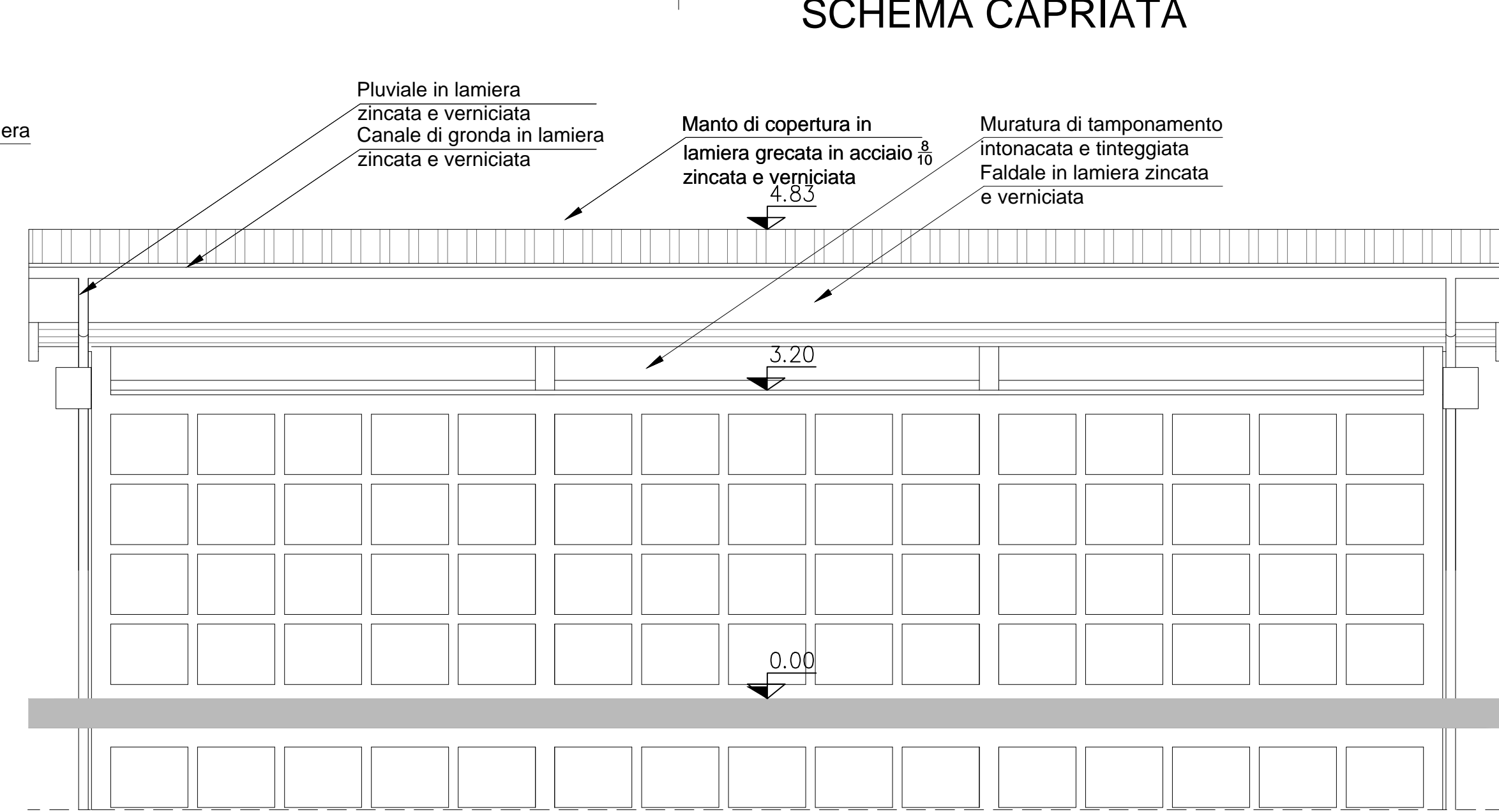
PROSPETTO LATERALE

1 : 50



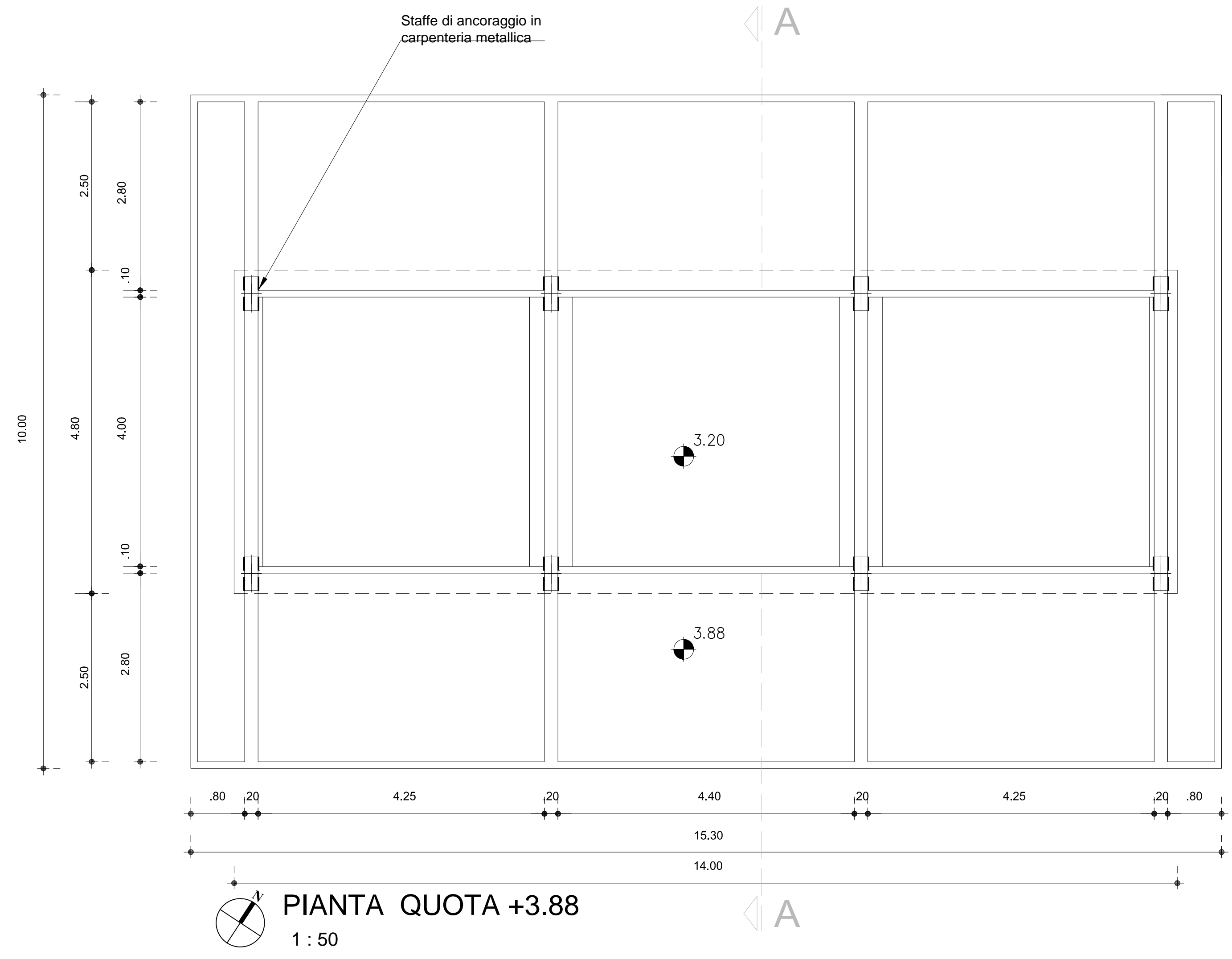
SEZIONE A-A

1 : 50



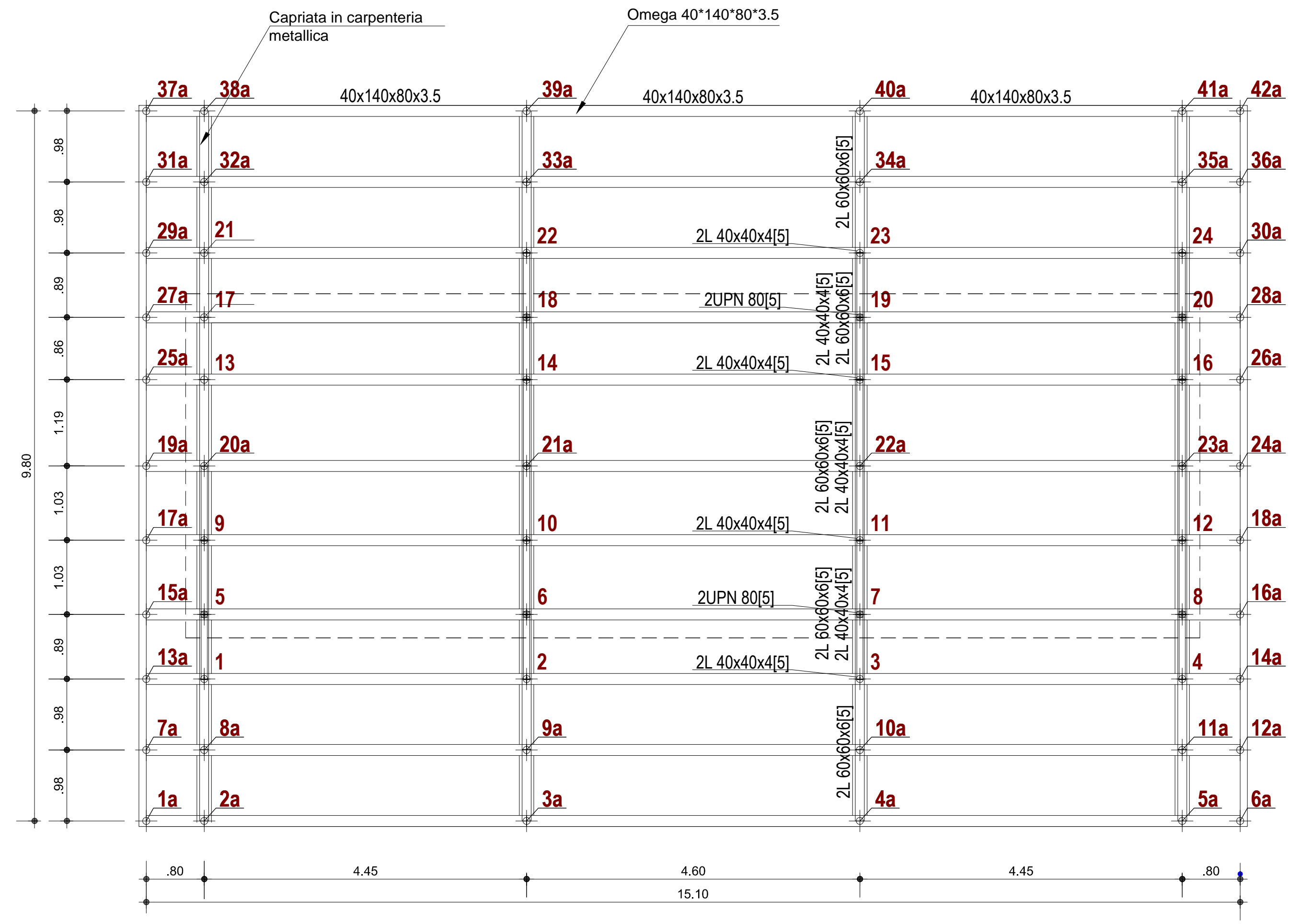
PROSPETTO FRONTALE

1 : 50



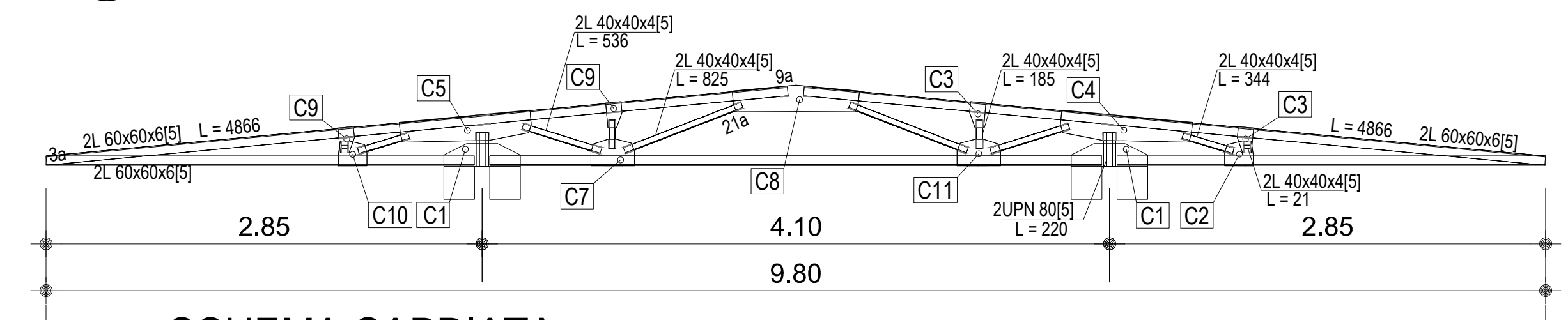
PIANTA QUOTA +3.88

1 : 50

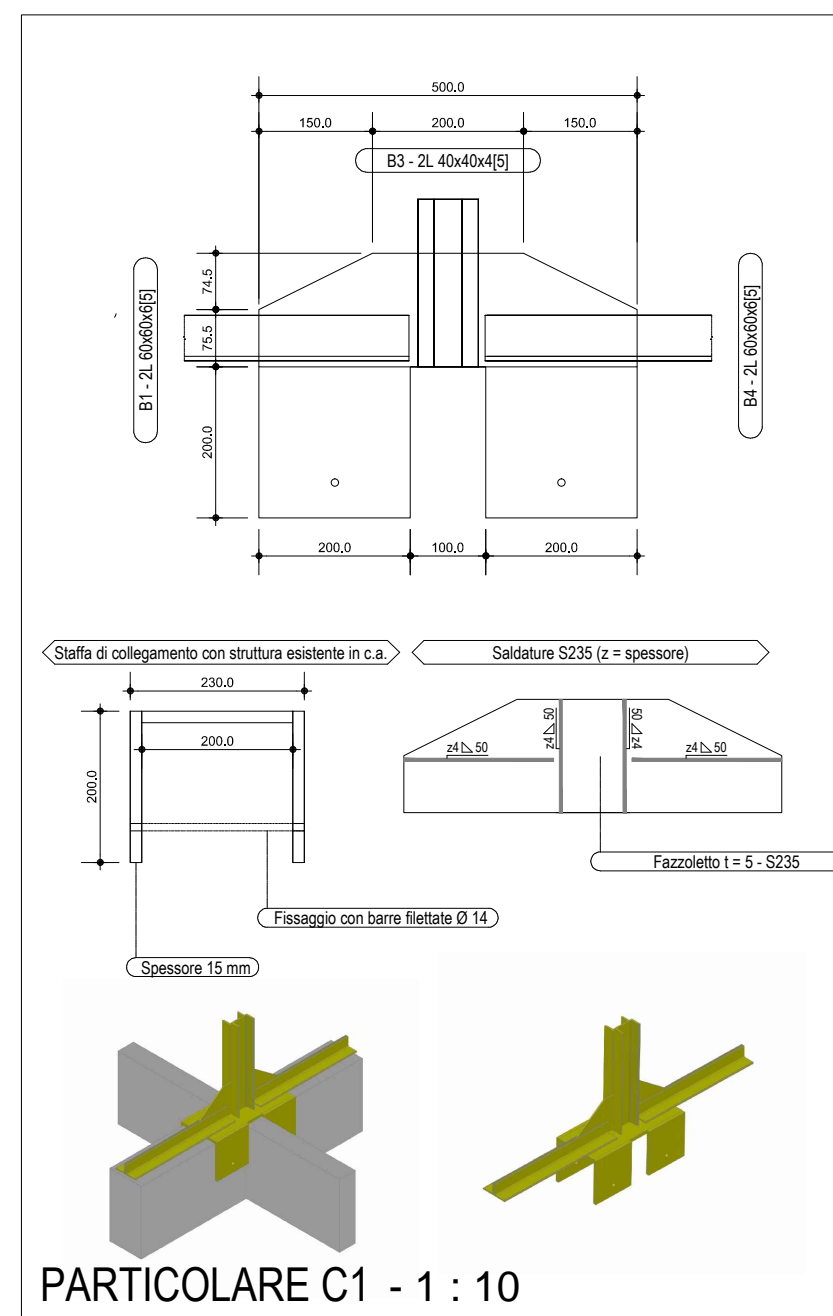


PIANTA ORDITURA

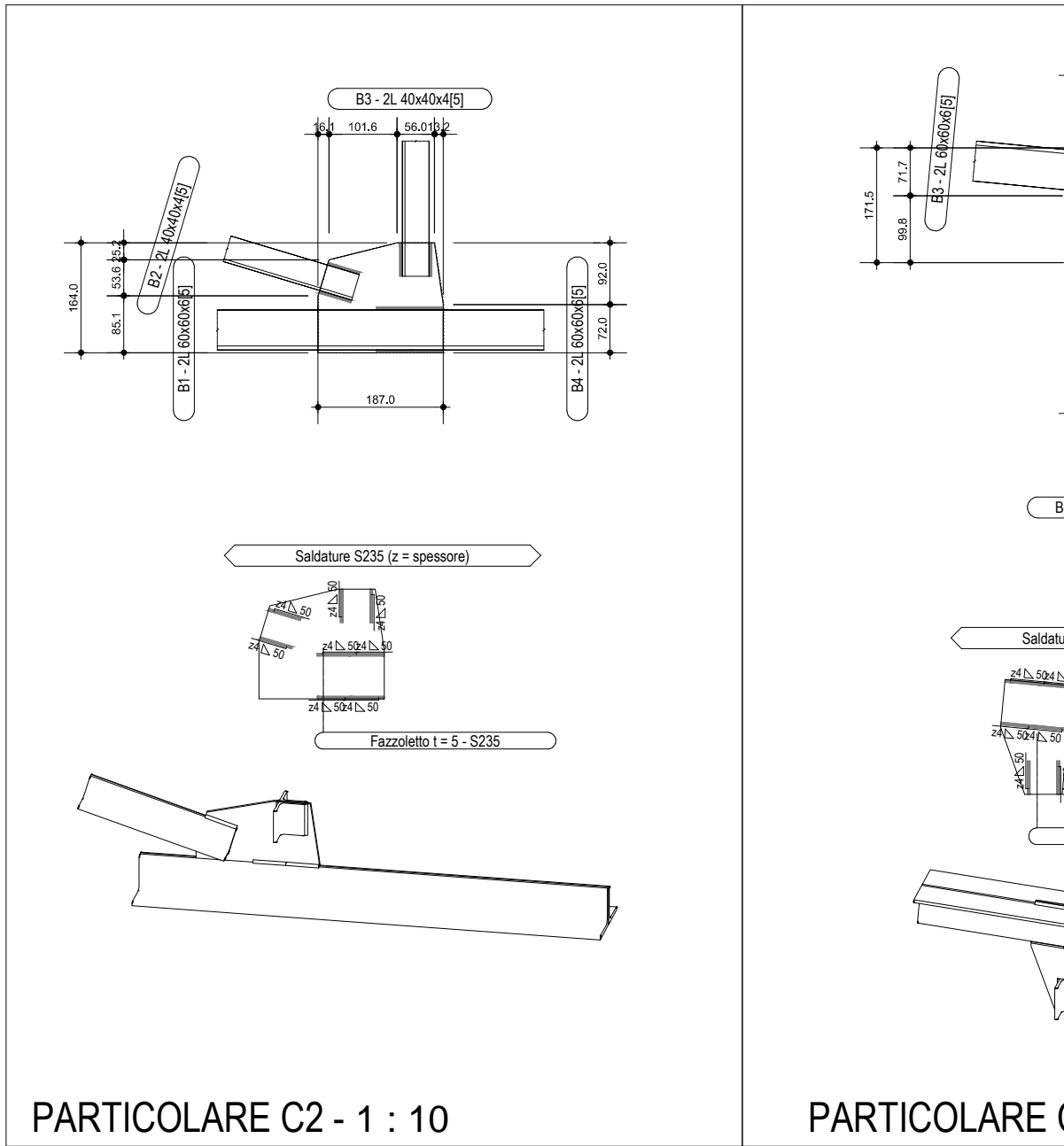
1 : 50



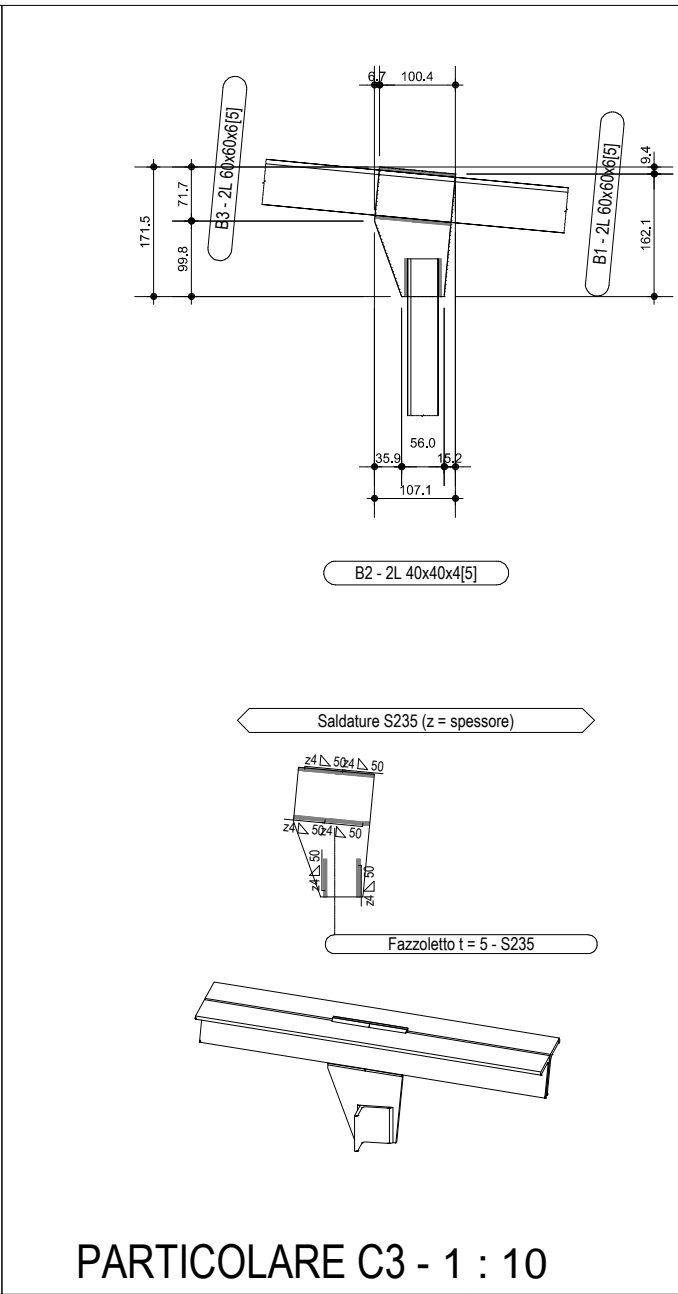
SCHEMA CAPRIATA



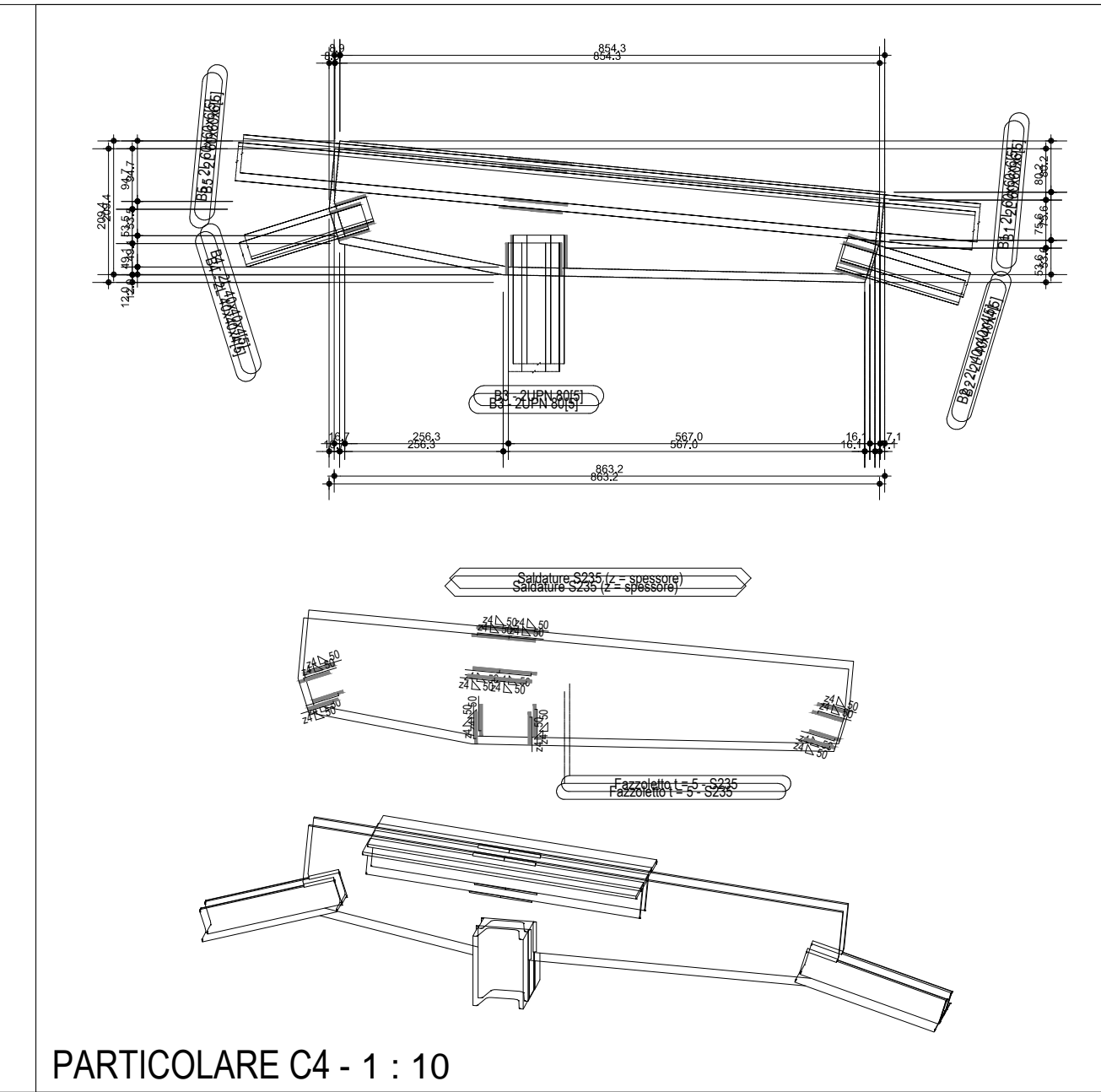
PARTICOLARE C1 - 1 : 10



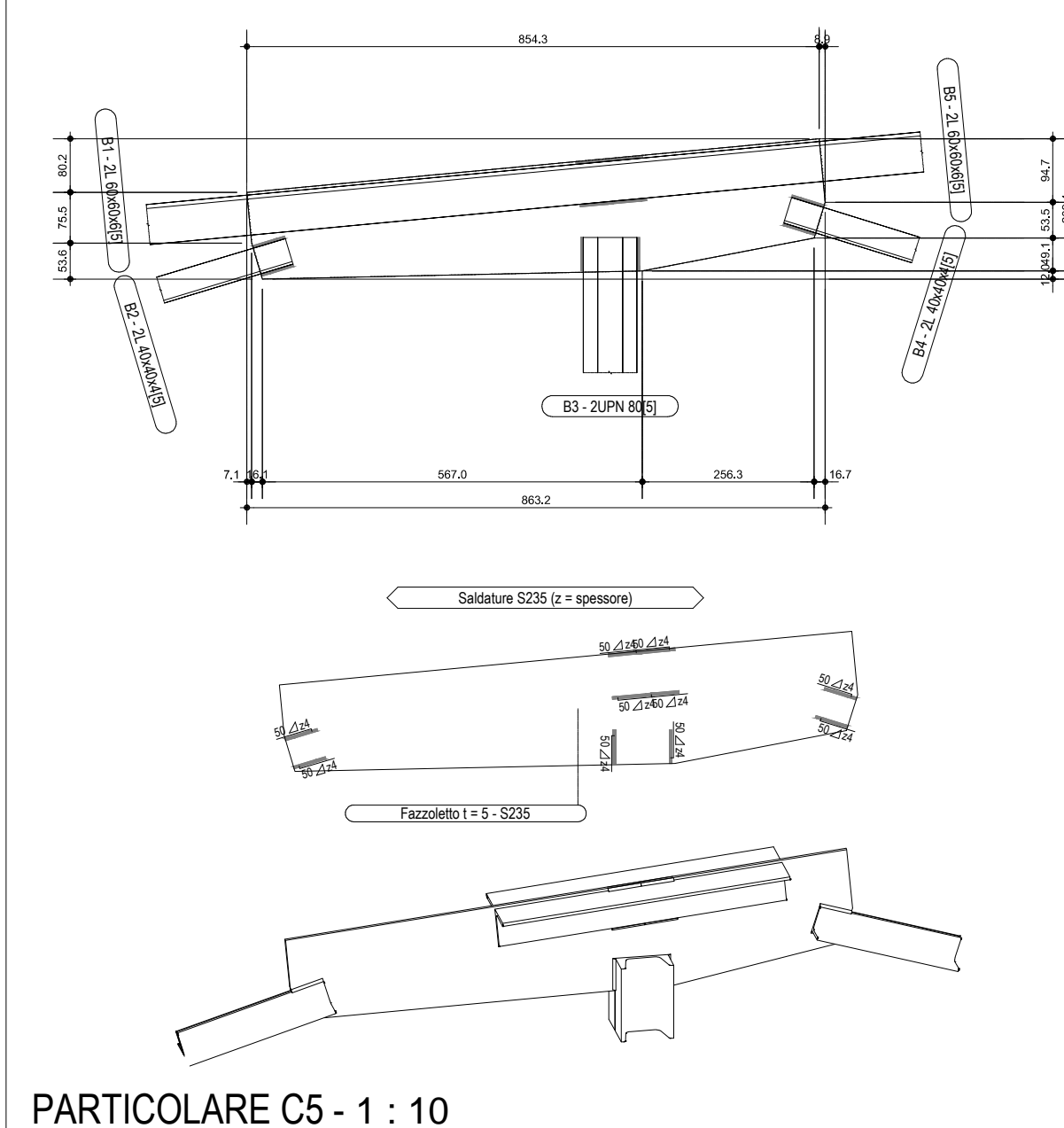
PARTICOLARE C2 - 1 : 10



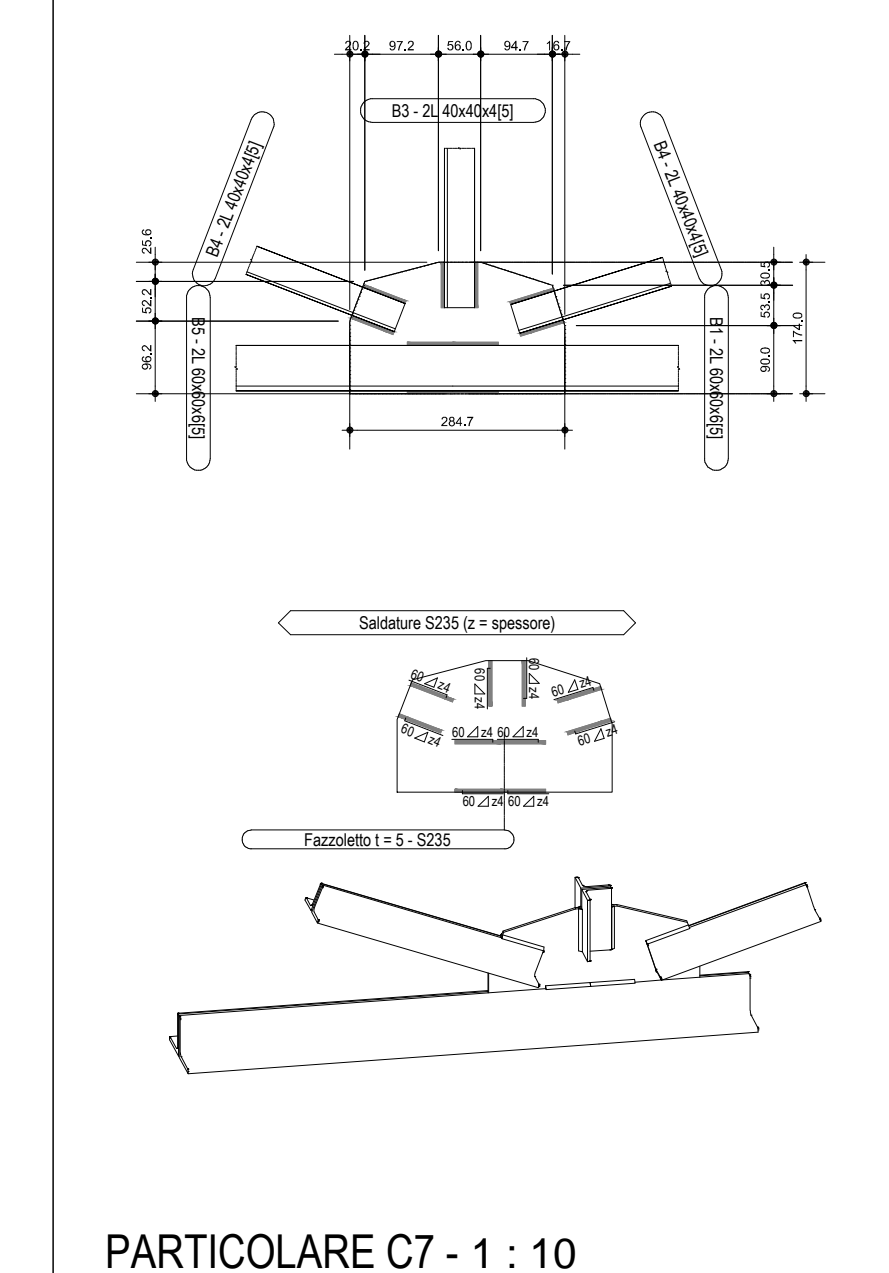
PARTICOLARE C3 - 1 : 10



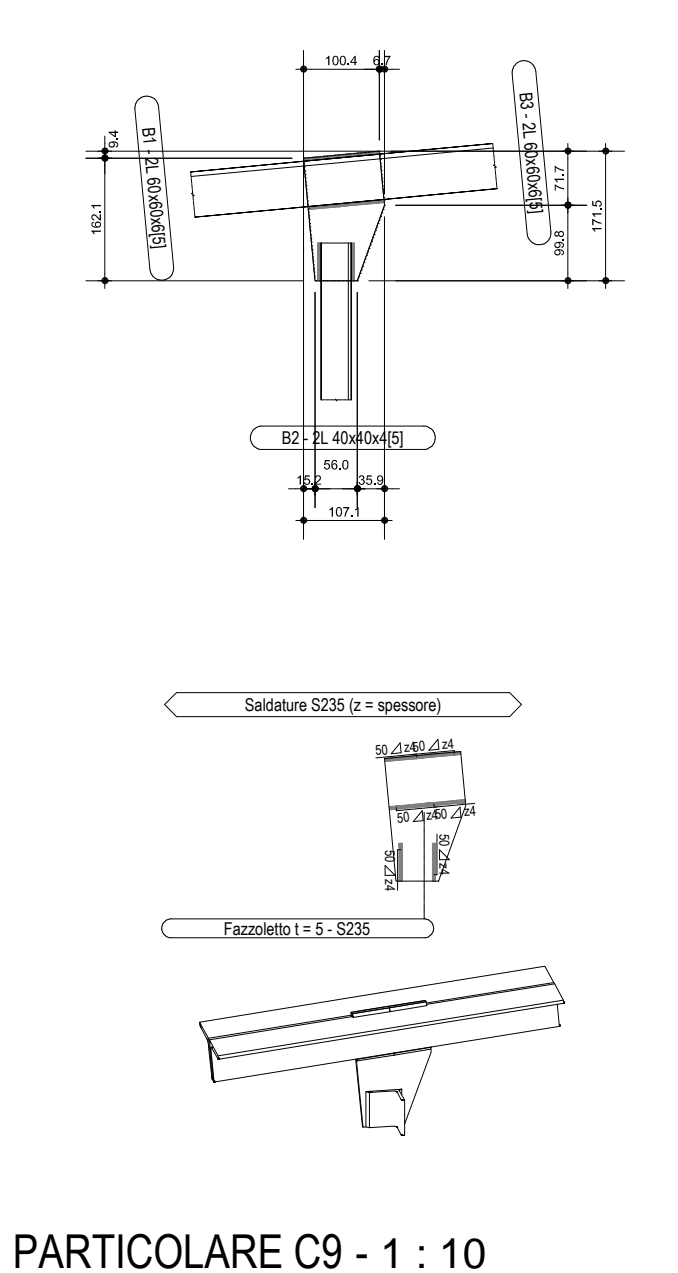
PARTICOLARE C4 - 1 : 10



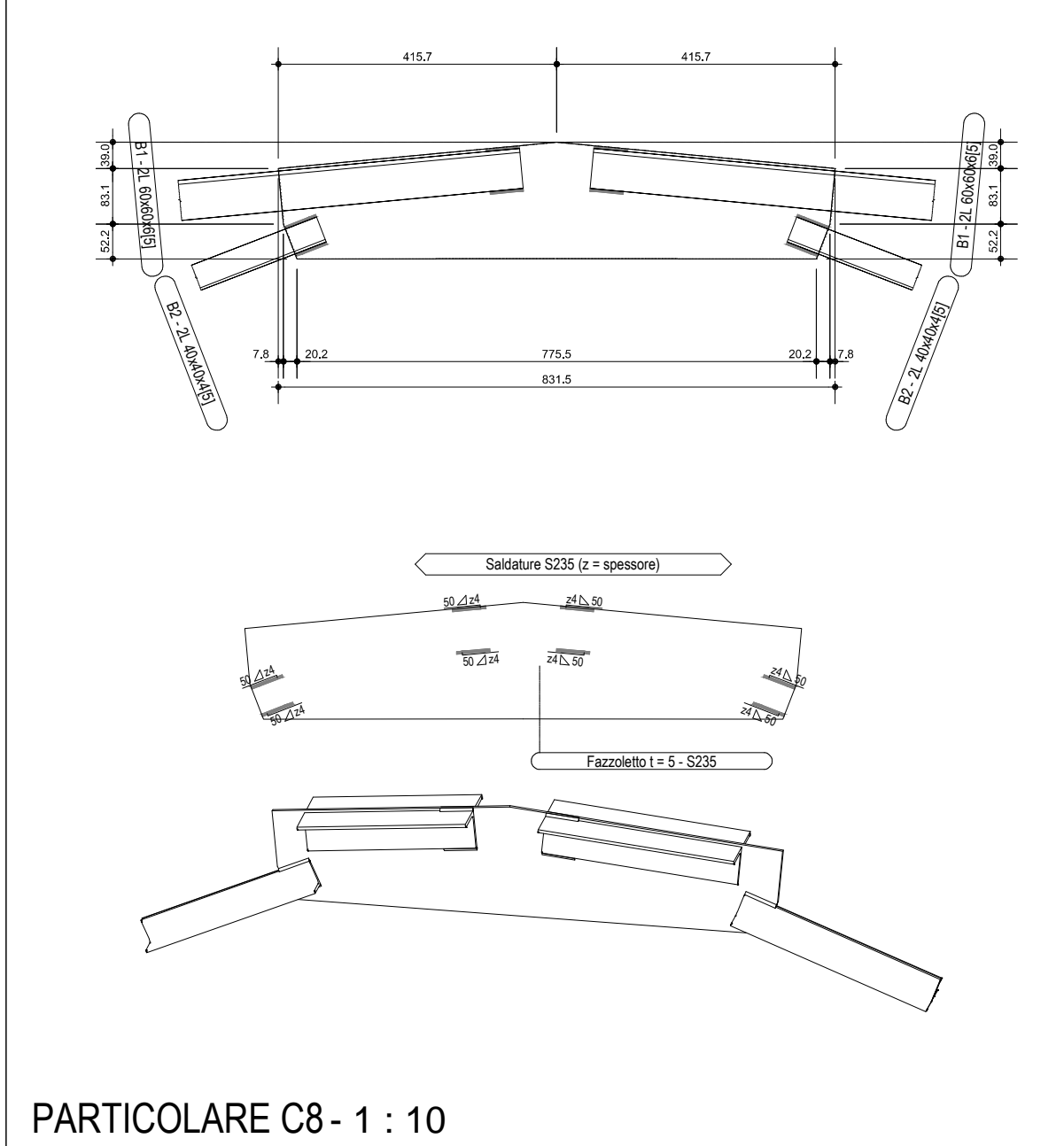
PARTICOLARE C5 - 1 : 10



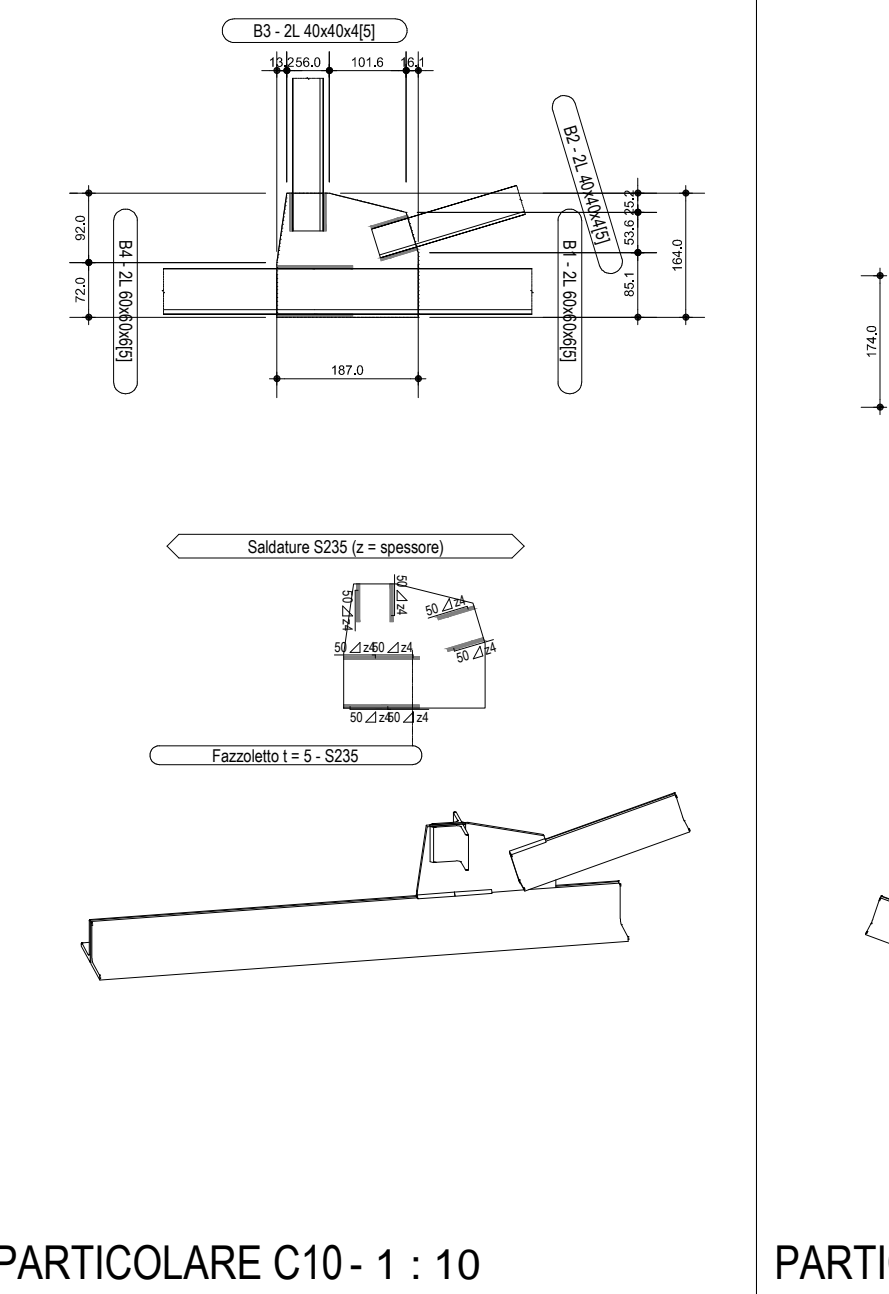
PARTICOLARE C7 - 1 : 10



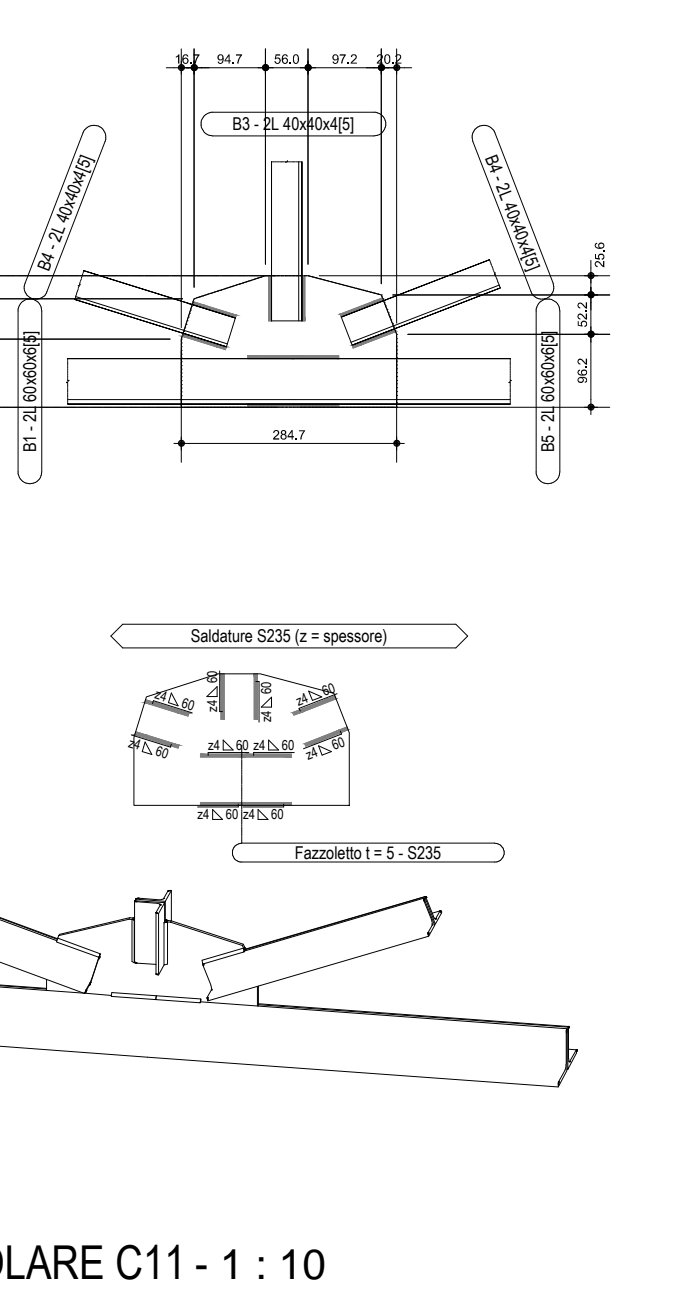
PARTICOLARE C9 - 1 : 10



PARTICOLARE C8 - 1 : 10



PARTICOLARE C10 - 1 : 10



PARTICOLARE C11 - 1 : 10